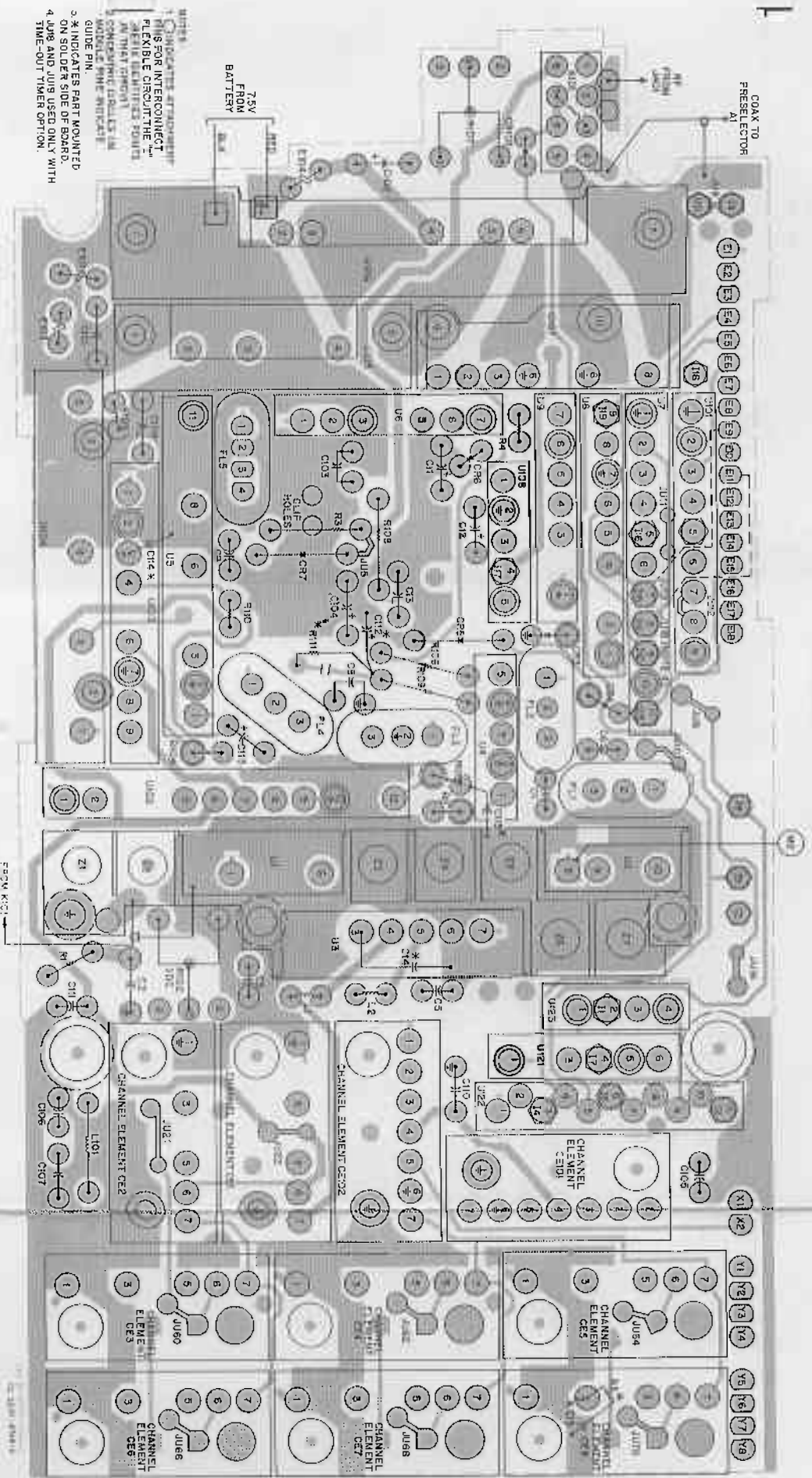


MAIN CIRCUIT BOARD (SOLDER SIDE)



1. DIODES CR509-CR516 CONNECTED AS REQUIRED TO SELECT CE101 OR CE102.
 2. DIODES CR509 THRU CR516 SHOW SELECTING CE102 FOR CHANNELS F1-F7. CR516 SHOW SELECTING CE101 FOR CHANNEL F8. REFER TO CHANNEL ELEMENT DATA SHEET FOR CHANNEL ELEMENT CONNECTIONS.

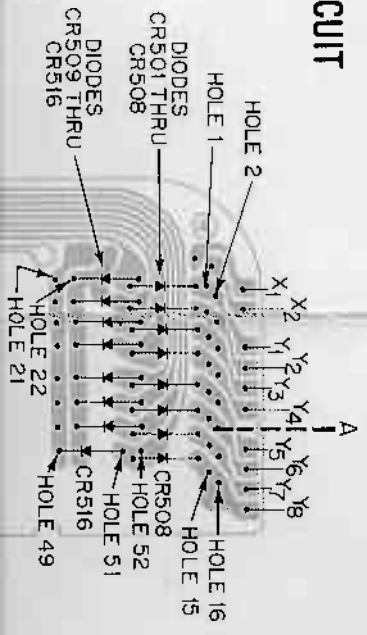
MULTIPLE FREQUENCY FLEXIBLE CIRCUIT



NOTES:

- DIODES CR509-CR516 CONNECTED AS REQUIRED TO SELECT CE101 OR CE102.
- DIODES CR509 THRU CR516 SHOW SELECTING CE102 FOR CHANNELS F1-F7. CR516 SHOW SELECTING CE101 FOR CHANNEL F8. REFER TO CHANNEL ELEMENT DATA SHEET FOR CHANNEL ELEMENT CONNECTIONS.

REAR VIEW



VR (HST OPT ON)